



# Jiangyin Topwill Flange Fitting Co.,Ltd

## Loose Plate Flange - Dimension ISO EN 1092-1 Type 02 (DIN 2642) PN10/16

ASTM A 240/A240M:

EN10028-7 ( DIN17440 )

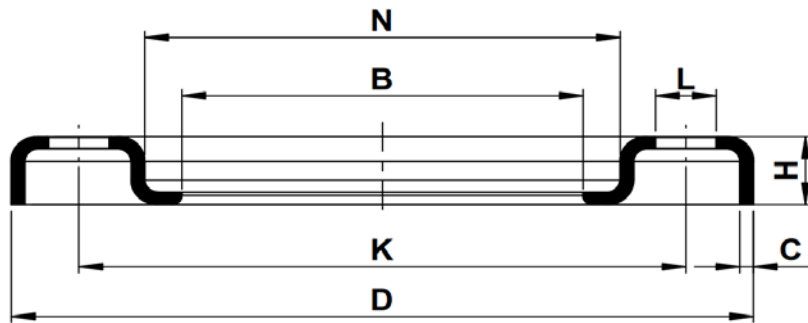
AD2000-W2,W9

AISI304/304L ; AISI316/316L; 304/1.4301; Q235

PED

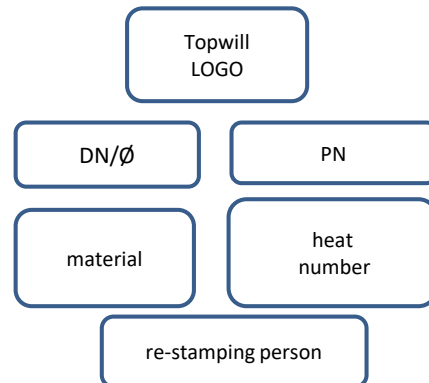
Inspection Certificate EN 10204-3.1

DN	PN	∅ ISO	D	K	L	Holes N°	B	N	H	C
15	10/16	21.3	95	65	13.5	4	24	38	12	3
20	10/16	26.9	105	75	13.5	4	30	48	14	3
25	10/16	33.7	115	85	13.5	4	37	53	16	3
32	10/16	42.4	140	100	17.5	4	46	68	16	3
40	10/16	48.3	150	110	18	4	54	77	17.5	4
50	10/16	60.3	165	125	18	4	65	91	19.5	4
65	10/16	76.1	185	145	18	4	81	108	21.5	4
80	10/16	88.9	200	160	18	8	94	123	21.5	4
100	10/16	114.3	220	180	18	8	119	141	22	4
125	10	139.7	250	210	18	8	145	168	22	5
150	10	168.3	285	240	22	8	173	192	26	5
200	10	219.1	340	295	22	8	225	245	28	6
250	10	273	395	350	22	12	279	295	31	6
300	10	323.9	445	400	22	12	329	345	34	6



Content of the steel seal:

Font size:4-5mm



According to different specifications and models, the position of the steel stamp will be different, but the content logo will not change

DN15-DN100 : PN10/16 ; DN125-300 : PN10